

Public Service Commission and Public Health Response

September 19, 2018

Department for Public Health

John Hunt, Regional Preparedness Coordinator

Kim Hall, Regional Preparedness Coordinator



Objectives

- Describe how the Department for Public Health Emergency Preparedness Program supports Kentucky's public health and medical preparedness, response, and recovery activities.
- Describe how the Department for Public's Health's State Health Operations Center (SHOC) coordinates Emergency Support Function (ESF) 8 - Public Health and Medical Support for emergencies and disasters.
- Describe the types of deployable state and regional assets that are prepositioned throughout Kentucky.

WHY EMERGENCY PREPAREDNESS?



Kentucky Public Health
Prevent. Promote. Protect.

KY is in the Top 10 For Disasters

Number of Disasters

Kentucky ranks 6th in the number of declared disasters since the 1960s

Population

Kentucky ranks 26th population

State
Ranking



Land Area

Kentucky ranks 36th in land area

Public Health's Role

Incident Support

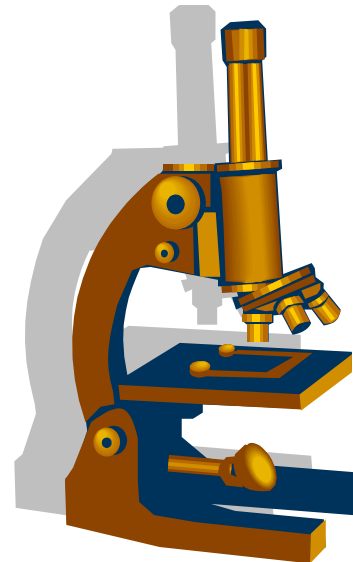
- State Health Operations Center (SHOC) and State EOC (SEOC)
- Communications/Information Sharing
- Situational Awareness
- Resources
- Public Information - Press Releases
- Public Health Guidance
- Epidemiology
- Laboratory
- Healthcare Associated Infections (HAI)

Tracking

- Injuries
- Illnesses
- Deaths
- Shelters
- Potable Water Shortages
- HCC Facility Status
- Staffing
- Resources (Personnel, Equipment, Supplies)
- Incident Specific Issues
- Any UNMET Needs

Public Health Activations

- Flooding
- Hepatitis A Outbreak
- Foodborne Illnesses
- Power Outages
- GI Illness Outbreak
- Tornado/Severe Weather Events
- White Powder Events
- Pertussis Outbreak
- Multi Epi Events
- Fungal Meningitis
- Ebola Preparedness
- Zika Virus Preparedness
- H1N1
- Training and Exercises
- Multiple Planned Events



Public Health Responses



Kentucky Public Health
Prevent. Promote. Protect.

Hurricane Katrina

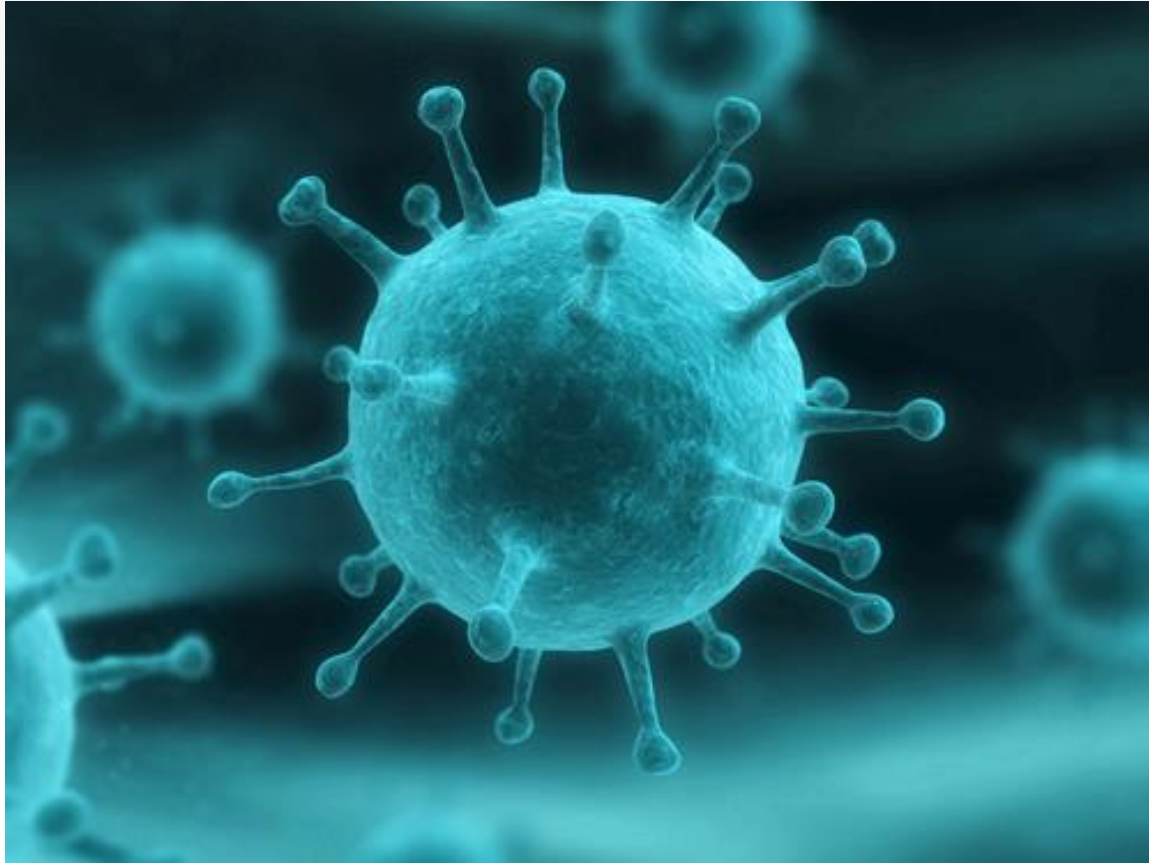


Hurricane Gustav



Shelter at the Fairgrounds,
Louisville, KY

H1N1 Influenza



Influenza – Statewide response

World Equestrian Games (WEG)



Kentucky Horse Park

Tornadoes





West Liberty, KY



Multiple Public Health Incidents



INFECTIONS

Whooping Cough
(Pertussis)

Ebola



Ebola Preparedness and Surveillance

Winter Storm



I-65 & I-75 Traffic

Zika



Solar Eclipse



KY Nurse Strike Team



Kentucky's Prepositioned ESF 8 Resources



HPP Resources



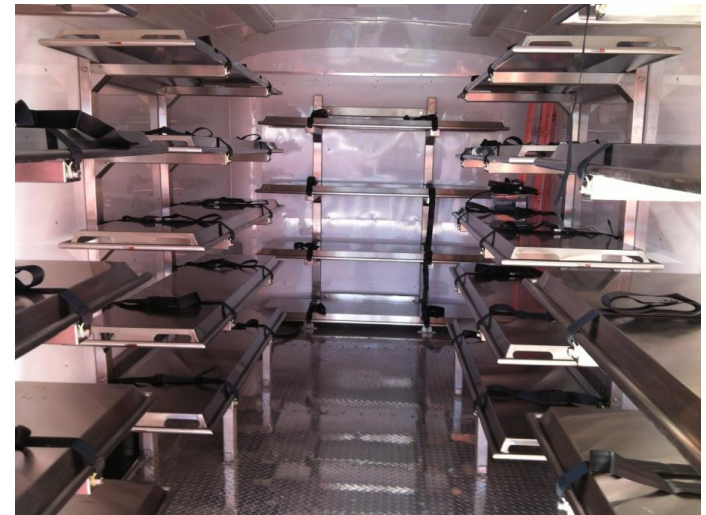
HPP Resources



Mobile Hospital Trailer and Tent



Mass Fatality Trailer and Shelving



HPP Resources



Decon Trailer



Mass Casualty Trailer



Communications Trailer



Pharmacy Trailer

HPP Resources



Generators

Water Purification Systems

- 68 portable units of various sizes are positioned throughout the state in each of the Healthcare Coalitions
 - Each system has designated chlorinator attachment
- Manufactures:
 - First Water System
 - Aqua Sun Water System
- Use: To purify water from an acceptable source at the rate of 60 gal/hr - 56,000 gal/day
- ***Note: Working with Division of Water for approval to use these systems in KY.**

HPP Resources



Department for Public Health's State Health Operations Center (SHOC)



Guiding Plans and Documents

- Kentucky Emergency Operations Plan (EOP)
 - ESF 8 Public Health and Medical Services Annex
- State Health Operations Center (SHOC) Support Plan
- Multiple Supporting Plans and Standard Operating Guidelines (SOG)



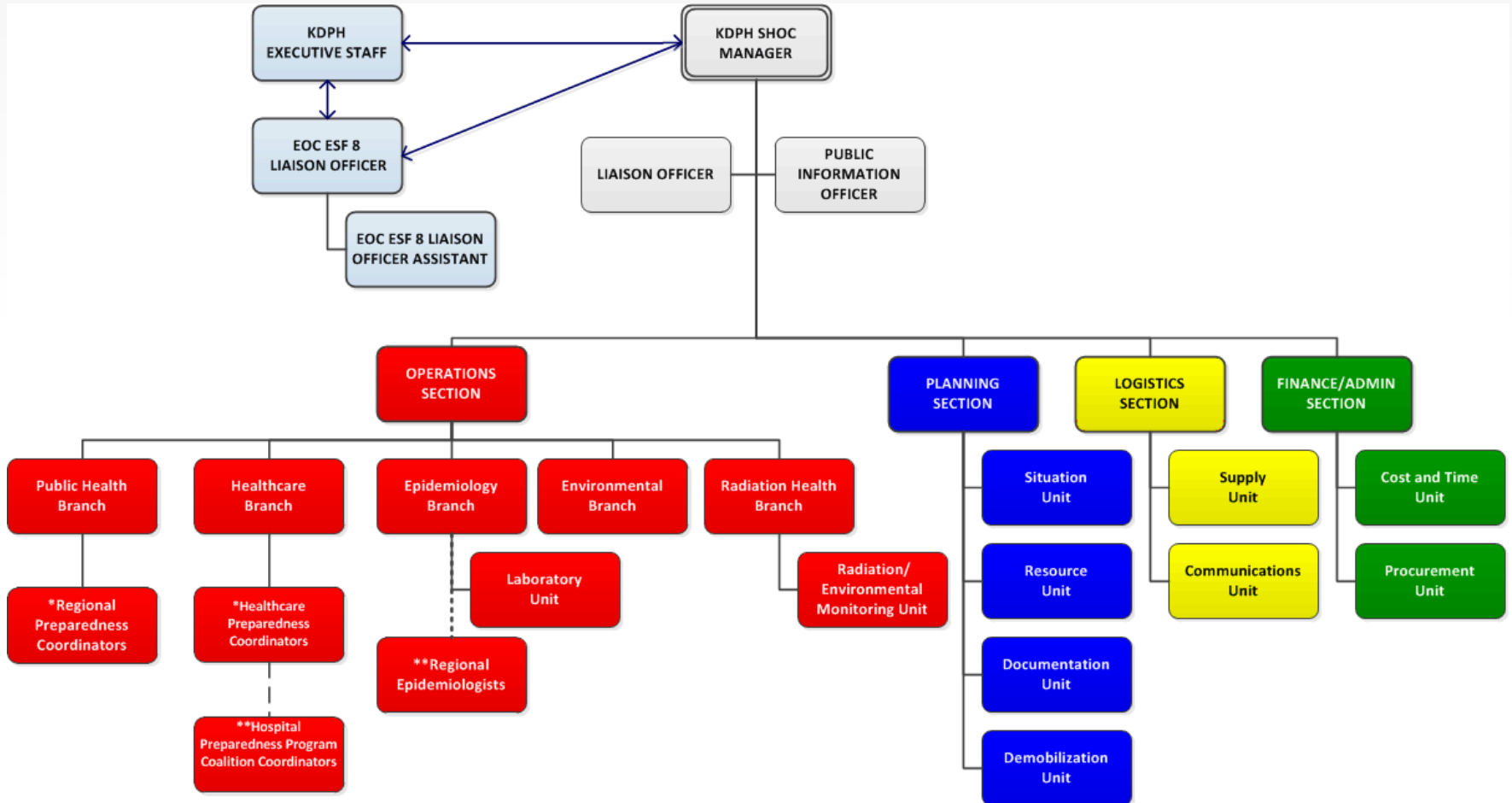
Putting the SHOC in Action

- Hands on Training
- Statewide Monitoring
 - Real-world Events
 - Exercises
- Activation Levels
 - 4 - Monitoring
 - 3 - Limited
 - 2 - Partial
 - 1 - Full
- Health Alert Network
- Planning “P” Meetings
- Conference Calls/Webinars
- Incident Action Plans/Situation Reports

Contact Information

- **Email:**
chfsdphdoc@ky.gov
- **Telephone**
 - (502) 564-5459
 - (502) 564-5460
- **Fax:** (502) 696-5852

SHOC ICS



Kentucky Department of Public Health REGIONAL PREPAREDNESS COORDINATORS

Kim Yazell

Regional Program Supervisor
Nicholasville, KY 40356
KimD.Yazell@ky.gov
Office: 859-885-4149 x 1029
Cell: 502-229-5573
Fax: 859-887-3683

Jim House

Branch Manager
275 E Main Street, HS1E-J
Frankfort, KY 40621
Office: 502-564-7243 x4034
Cell: 502-382-4722
Fax: 502-564-4387

Kim Yazell (R15N)

210 E Walnut Street
Nicholasville, KY 40356
KimD.Yazell@ky.gov
Office: 859-885-4149 x 1029
Cell: 502-229-5573
Fax: 859-887-3683

Barbara Yates (R7)

1788 Commerce Parkway
Lagrange, KY 40031
Barbara.Yates@ky.gov
Office: 502-991-0530
Cell: 502-682-3788
Fax: 502-222-8723

Sandy Glover (R 8/9)

Rowan County HD
730 West Main Street
Morehead, KY 40351
Sandra.Glover@ky.gov
Office: 606-784-8954 ext. 135
Cell: 606-359-4908
Fax: 606-783-1443

John Hunt (R10)

Lawrence County HD
1080 Meadowbrooke Ln.
Louisa, KY 41230
JohnM.Hunt@ky.gov
Office: (606) 638-0354
Cell: 502-682-4047
Fax: 606-638-3008

Margaret Hibbs (R3)

Green River District
1501 Breckenridge Street
Owensboro, KY 42301
Margaret.Hibbs@ky.gov
Office: 270-686-7747x3005
Cell: 502-352-3947
Fax: 270-926-9862

Mike Harmon (R5)

Lincoln Trail District
108 New Glendale Rd
Elizabethtown, KY 42701
MichaelA.Harmon@ky.gov
Office: 270-769-1801 x 1010
Cell: 502-352-5047
Fax: 270-765-7274

Joey Riddle (R6)

North Central; District HD
1020 Henry Clay Street
Shelbyville, KY 40085
Joey.Riddle@ky.gov
Office: 502-633-1243
Cell: 502-682-4037
Fax: 502-543-2998

Kim Hall (R11)

Magoffin County Health
Department
132 E. Mountain Pkwy.
Salyersville, Ky. 41465
Phone: 606-349-8212
Ext. 125
Fax: 606-349-8518

Tina Massengill (R1)

Marshall County HD
307 E. 12th Street
Benton, KY 42025
Tina.Massengill@ky.gov
Office: 270-252-2710
Cell: 502-352-8504
Fax: 270-527-5321

TBA (R2)

Interim coverage by Tina
Massengill and Margaret
Hibbs
Lyon County HD
211 W Fairview
PO Box 96
Eddyville, KY 42038

Jerrod Wright (R4)

Monroe County HD
452 East 4th Street
Tompkinsville, KY 42167
Jerrod.Wright@ky.gov
Office: 270-487-8782 x 236
Cell: 502-682-4011
Fax: 270-487-5457

Jessica Gover (R14)

Lake Cumberland HD
500 Bourne Ave, Suite B
Somerset, KY 42501
Jessica.Gover@ky.gov
Office: 606-878-4781 x1295
Cell: 502-682-4019
Fax: 606-878-9691

Rebecca Hardin (R15-S)

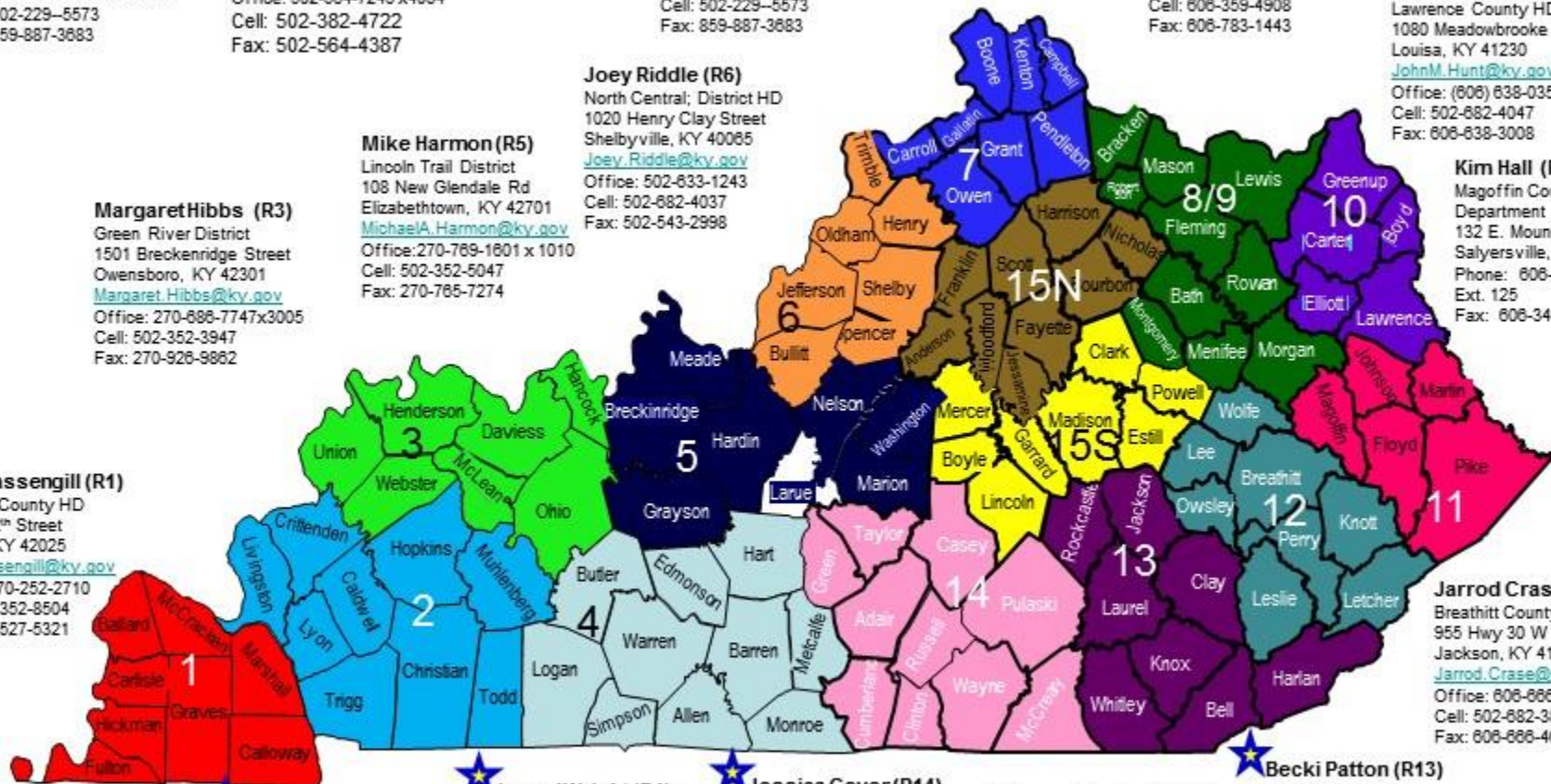
Boyle County HD
448 South 3rd St
Danville, KY 40422
RebeccaL.Hardin@ky.gov
Office 859-236-2053
BB: 502-352-8319
Fax: 859-236-2883

Becki Patton (R13)

Laurel County HD
525 Whitley Street
London, KY 40741
Becki.Patton@ky.gov
Office: 606-878-7754
Cell: 502-682-4052
Fax: 606-884-8295

Jarrold Crase (R12)

Breathitt County HD
955 Hwy 30 W
Jackson, KY 41339
Jarrod.Crase@ky.gov
Office: 606-868-7732
Cell: 502-682-3849
Fax: 606-868-4601





Kentucky Public Health
Prevent. Promote. Protect.

Kentucky Department for Public Health Hospital Preparedness Program Staff

Jim House, HPP Supervisor
Office: KDPH, Frankfort, KY
Work Cell: (502) 330-5950

Rick Johnson, Program Coordinator
Office: KDPH, Frankfort, KY
Work Cell: (502) 330-7644

Greg Thomas, HPC
HCC Regions 1/2
Office: Lyon County Health Center
Eddyville, KY
Work Cell: (502) 905-9965

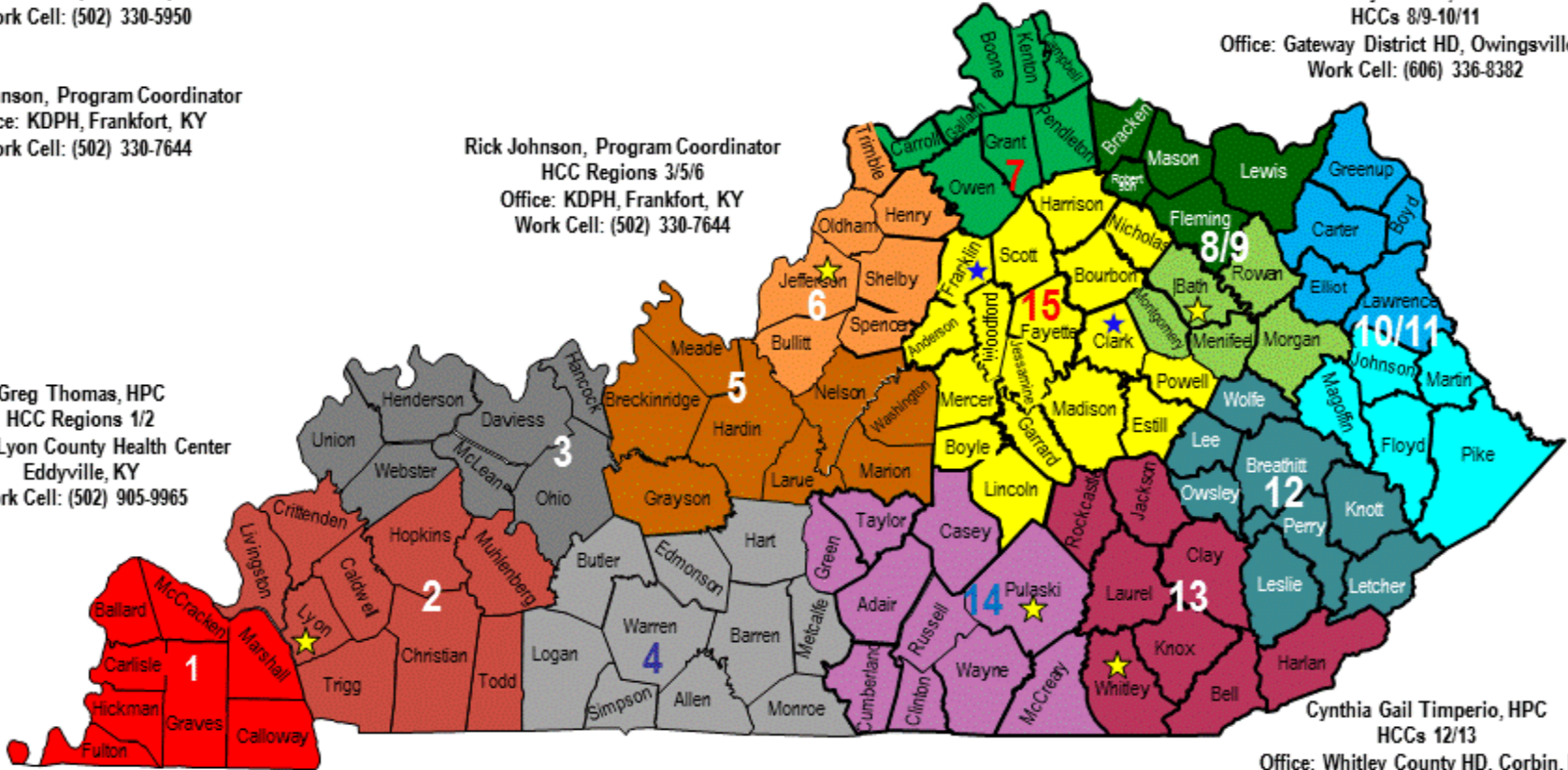
David Carney, HPC
HCC Regions 7/15
Office: Baptist Health Primary Care, Winchester, KY.
Work Cell: (502) 905-9969

Terry Stewart, HPC
HCCs 8/9-10/11
Office: Gateway District HD, Owingsville, KY
Work Cell: (606) 336-8382

Rick Johnson, Program Coordinator
HCC Regions 3/5/6
Office: KDPH, Frankfort, KY
Work Cell: (502) 330-7644

Jasie Logsdon, HPC
HCCs 4/14
Office: Lake Cumberland District Health Department
Somerset, KY.
Work Cell: (502) 905-9962

Cynthia Gail Timperio, HPC
HCCs 12/13
Office: Whitley County HD, Corbin, KY
Work Cell: (502) 905-9963



★ Office Locations

Questions



Kentucky Public Health

Prevent. Promote. Protect.

Kim Hall

132 East Mountain Parkway

Salyersville, KY 41465

Kimberly.hall@ky.gov

606-793-3243



John M Hunt

1080 Meadowbrook Lane

Louisa, KY 41230

Johnm.hunt@ky.gov

502-682-4047

